



ET16537  
First Edition  
June 2020

# ZenPower PD 10000 使用手冊

**ABTU020**

**ASUS**<sup>®</sup>  
IN SEARCH OF INCREDIBLE

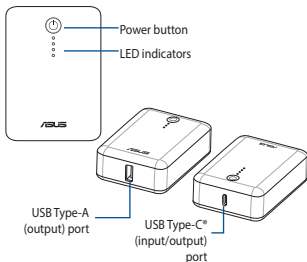


## Table of Contents / 目錄

English.....	3
繁體中文.....	10



## Getting to know your Power Bank



English

## LED indications

### Charging the Power Bank

Charge status	LED 1	LED 2	LED 3	LED 4
0% - 5%	○	○	○	○
5% - 25%	●	○	○	○
26% - 50%	●	●	○	○
51% - 75%	●	●	●	○
76% - 99%	●	●	●	●
100%	●	●	●	●
Error detected*	○	○	○	○

### LED status

- Solid blue
- Solid white
- Blinking blue
- Blinking white
- Rapid blinking blue
- Rapid blinking white
- Off

## Charging devices using the Power Bank

Discharge status	LED 1	LED 2	LED 3	LED 4
100%	●	●	●	●
76% - 99%	○	○	○	○
56% - 75%	○	○	○	○
26% - 55%	○	○	○	○
6% - 25%	○	○	○	○
0% - 5%	○	○	○	○
0%	○	○	○	○
Error detected*	○	○	○	○

## Fast charging the Power Bank

Charge status	LED 1	LED 2	LED 3	LED 4
0% - 5%	●	○	○	○
5% - 25%	●	○	○	○
26% - 50%	●	○	○	○
51% - 75%	●	●	○	○
76% - 99%	●	●	●	○
100%	●	●	●	●
Error detected*	●	○	○	○



## Fast charging devices using the Power Bank

Discharge status	LED 1	LED 2	LED3	LED 4
100%	●	●	●	●
76% - 99%	●	●	●	●
56% - 75%	●	●	●	○
26% - 55%	●	●	○	○
6%-25%	●	○	○	○
0% - 5%	●	○	○	○
0%	○	○	○	○
Error detected*	●	●	●	●

English

- \* To stop the Power Bank from blinking when an error has been detected, re-insert the cable into the Power Bank.

### NOTES:

- When the Power Bank starts to charge your device, the LED indicators will light up and then begin to flash after 5 seconds.
- When you are not charging a device and press the power button of the Power Bank, the LED indicators will light up to display its power status for 5 seconds.

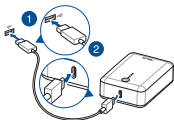
## Specifications

<b>Cell type</b>	Rechargeable Li-Ion cell
<b>Cell capacity</b>	35.2Wh
<b>Rated capacity</b>	5V/6200mAh; 9V/3300mAh; 12V/2400mAh
<b>Charging temperature</b>	5°C - 40°C
<b>Size</b>	78.8mm x 55.8mm x 26mm
<b>Weight</b>	186 ± 5g
<b>Charging time</b>	< 5.5 hrs with DC 5V ≐ 2A via the bundled USB cable
	< 3.5 hrs with DC 9V ≐ 2A via the bundled USB cable
<b>Input (USB Type-C®)</b>	5V ≐ 3A / 9V ≐ 2A
<b>Output 1 (USB Type-A)</b>	5V ≐ 2.4A / 9V ≐ 2A / 12V ≐ 1.5A, 18W (MAX)
<b>Output 2 (USB Type-C®)</b>	5V ≐ 3A / 9V ≐ 2A / 12V ≐ 1.5A, 18W (MAX)
<b>Total output (USB Type-A + USB Type-C®)</b>	5V ≐ 3A, 15W (MAX)

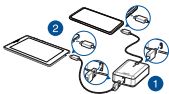
**NOTES:**

- When connected to your device, the Power Bank starts charging your device automatically. If not, press the power button on the Power Bank to charge your device.
- Use the Power Bank in environments with temperatures between 25°C and 40°C to fast charge the mobile devices which supports Power Delivery3.0.
- To fast charge the Power Bank, use an adapter which supports Power Delivery3.0. in environments with temperatures between 25°C and 40°C.
- The Power Bank supports low-current charging.
- When using the pass-through charging mode, you can charge your device first and recharge the Power Bank at the voltage up to 5V.

## Charging the Power Bank



## Using the Power Bank



## Safety Notices

- Before using the product, carefully read all the manuals that came with your Power Bank.
- Fully charge the Power Bank before using it for the first time.
- Use the bundled USB cable when charging the Power Bank or when using the product to charge your devices.
- Disconnect your device and cable from the Power Bank when your device becomes fully charged or when you stop charging your device.
- Check your local voltage regulations before using the Power Bank.
- Never attempt to disassemble and reassemble the Power Bank.
- Do not operate the Power Bank beyond 40°C (104°F) environment, nor subject it to water or fire, or any attempt to break the casing.



### Rechargeable Battery Recycling Service in North America

For US and Canada customers, you can call 1-800-822-8837 (toll-free) for recycling information of your ASUS products' rechargeable batteries.





## FCC Statement

This device complies with part 15 of the FCC Rules. Operation is subject to the following two conditions: (1) This device may not cause harmful interference, and (2) this device must accept any interference received, including interference that may cause undesired operation.

English

**CAUTION:** Any changes or modifications not expressly approved by the grantee of this device could void the user's authority to operate the equipment.

### FCC COMPLIANCE INFORMATION

Per FCC Part 2 Section 2.1077



**Responsible Party:** Asus Computer International  
**Address:** 48720 Kato Rd, Fremont, CA 94538.  
**Phone/Fax No:** (510)739-3777/(510)608-4555

hereby declares that the product

**Product Name :** RECHARGEABLE LI-ION POWER BANK  
**Model Number :** ABTU020

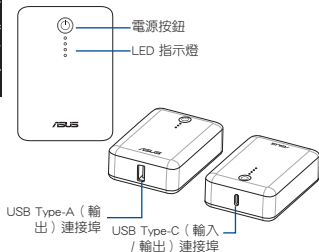
**compliance statement:**

This device complies with part 15 of the FCC Rules. Operation is subject to the following two conditions: (1) This device may not cause harmful interference, and (2) this device must accept any interference received, including interference that may cause undesired operation.

Ver. 100620



## 外觀介紹



## LED 指示燈說明

## 為行動電源充電

行動電源 充電狀態	LED 1	LED 2	LED 3	LED 4
0% - 5%	○	○	○	○
5% - 25%	●	○	○	○
26% - 50%	●	●	○	○
51%-75%	●	●	●	○
76% - 99%	●	●	●	●
100%	●	●	●	●
錯誤 **	○	○	○	○

## LED 狀態

- 藍色恆亮
- 白色恆亮
- 藍色閃爍
- 白色閃爍
- 藍色快速閃爍
- 白色快速閃爍
- 熄滅



## 使用行動電源為裝置充電

行動電源 放電狀態	LED 1	LED 2	LED 3	LED 4
100%	●	●	●	●
76% - 99%	○	○	○	○
56% - 75%	○	○	○	○
26% - 55%	○	○	○	○
6%-25%	○	○	○	○
0% - 5%	○	○	○	○
0%	○	○	○	○
錯誤 **	○	○	○	○

繁體中文



## 快速為行動電源充電

行動電源 充電狀態	LED 1	LED 2	LED 3	LED 4
0% - 5%	●	○	○	○
5% - 25%	●	○	○	○
26% - 50%	●	○	○	○
51%-75%	●	●	○	○
76% - 99%	●	●	●	○
100%	●	●	●	●
錯誤 **	●	○	○	○



## 使用行動電源為裝置快速充電

行動電源 放電狀態	LED 1	LED 2	LED3	LED 4
100%	●	●	●	●
76% - 99%	●	○	○	○
56% - 75%	●	○	○	○
26% - 55%	●	○	○	○
6%-25%	●	○	○	○
0% - 5%	●	○	○	○
0%	○	○	○	○
錯誤 **	●	○	○	○

\* 重新插拔 USB 線即可排除錯誤。

## 注意：

- 行動電源開始為裝置充電時，LED 指示燈亮起 5 秒後開始閃爍。
- 未連接 USB 連接線時，按下電源按鍵將顯示電量指示燈，指示燈會在 5 秒後自動關閉。



## 基本規格

電池類型	鋰離子電芯
電芯總容量	35.2Wh
額定容量	5V/6200mAh；9V/3300mAh； 12V/2400mAh
充電溫度	5°C - 40°C
尺寸	78.8mm x 55.8mm x 26mm
重量	186 ± 5g
充電時間	輸入 5V $\overline{=}$ 2A 時 < 5.5 小時 (透過隨附的 USB 線)
	輸入 9V $\overline{=}$ 2A 時 < 3.5 小時 (透過隨附的 USB 線)
輸入(USB Type-C)	5V $\overline{=}$ 3A / 9V $\overline{=}$ 2A
輸出 1 (USB Type-A)	5V $\overline{=}$ 2.4A / 9V $\overline{=}$ 2A / 12V $\overline{=}$ 1.5A, 18W (MAX)
輸出 2 (USB Type-C)	5V $\overline{=}$ 3A / 9V $\overline{=}$ 2A / 12V $\overline{=}$ 1.5A, 18W (MAX)
總輸出(USB Type-A + USB Type-C)	5V $\overline{=}$ 3A, 15W (MAX)

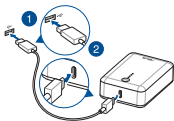
繁體中文



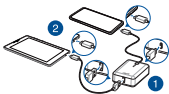
## 注意：

- 連接裝置後，行動電源會自動為裝置充電。若行動電源沒有為裝置自動充電，請按下行動電源上的電源按鈕開始為裝置充電。
- 請在環境溫度為 25°C - 40°C 下使用此產品，以為支援 PD 快充 3.0 版本的行動裝置快速充電。
- 欲為行動電源快速充電，請使用支援 PD 快充 3.0 版本的電源變壓器，並在環境溫度為 25°C - 40°C 下使用此產品。
- 行動電源支援低功率充電。
- 當使用邊充邊放的情境時，行動電源只能接受及提供最大 5V 的電源輸入及輸出，且會以充飽裝置為優先。

## 為行動電源充電



## 使用行動電源為裝置充電





## 安全注意事項

- 使用前請先詳閱產品說明書。
- 首次使用時，請先將行動電源充滿電。
- 請確認被充電裝置符合標準的 USB 規範，並以本產品所附的 USB 線材或相容本產品之傳輸線進行充電。
- 當裝置充滿電時或裝置不需再充電時，請將連接線及裝置從行動電源上移除
- 請注意輸入電壓、電流是否在規定值內，於國外使用請注意當地電壓。
- 本產品中包含鋰離子聚合物電芯，嚴禁私自拆開外殼，以免造成電芯破損或其他危險。
- 嚴禁任意拆解、擠壓、穿刺、短路本產品，同時請勿將本產品投入水中、火中、暴露於溫度高於 40°C (104 °F) 的環境中。



**小心：**未經受讓人許可，對裝置進行任何更改或修改，可能會令使用者的操作權限無效。

委製廠商: 華碩電腦股份有限公司

委製廠商地址: 台北市北投區立德路 15 號 1 樓

更多產品資訊請至官方網址查詢:<https://www.asus.com/tw>。



單元	限用物質及其化學符號					
	鉛 (Pb)	汞 (Hg)	鎘 (Cd)	六價鉻 (Cr <sup>6+</sup> )	多溴 聯苯 (PBB)	多溴二 苯醚 (PBDE)
外殼	○	○	○	○	○	○
電路板 及元件	○	○	○	○	○	○
五金 件 (螺 絲、鍍 片)	○	○	○	○	○	○
電池	○	○	○	○	○	○
其他 部件	○	○	○	○	○	○
USB 連 接線	○	○	○	○	○	○
備考1. “○” 係指該項限用物質之百分比含量未超出百分比含量基準值。						
備考2. “—” 係指該項限用物質為排除項目。						