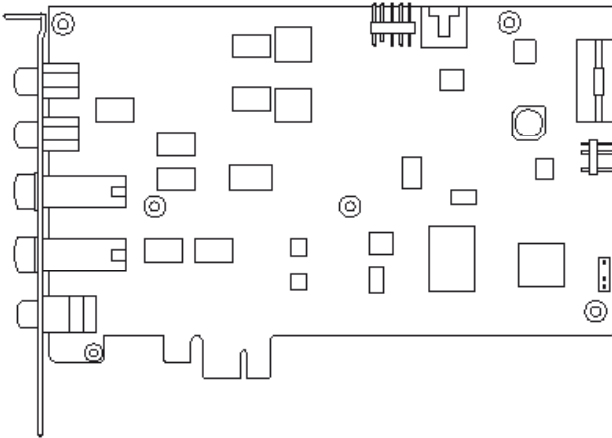




Xonar Essence STX

Audio Card

User Manual



E11126

Revised Edition V3

November 2015

Copyright © 2015 ASUSTeK COMPUTER INC. All Rights Reserved.

No part of this manual, including the products and software described in it, may be reproduced, transmitted, transcribed, stored in a retrieval system, or translated into any language in any form or by any means, except documentation kept by the purchaser for backup purposes, without the express written permission of ASUSTeK COMPUTER INC. ("ASUS").

Product warranty or service will not be extended if: (1) the product is repaired, modified or altered, unless such repair, modification or alteration is authorized in writing by ASUS; or (2) the serial number of the product is defaced or missing.

ASUS PROVIDES THIS MANUAL "AS IS" WITHOUT WARRANTY OF ANY KIND, EITHER EXPRESS OR IMPLIED, INCLUDING BUT NOT LIMITED TO THE IMPLIED WARRANTIES OR CONDITIONS OF MERCHANTABILITY OR FITNESS FOR A PARTICULAR PURPOSE. IN NO EVENT SHALL ASUS, ITS DIRECTORS, OFFICERS, EMPLOYEES OR AGENTS BE LIABLE FOR ANY INDIRECT, SPECIAL, INCIDENTAL, OR CONSEQUENTIAL DAMAGES (INCLUDING DAMAGES FOR LOSS OF PROFITS, LOSS OF BUSINESS, LOSS OF USE OR DATA, INTERRUPTION OF BUSINESS AND THE LIKE), EVEN IF ASUS HAS BEEN ADVISED OF THE POSSIBILITY OF SUCH DAMAGES ARISING FROM ANY DEFECT OR ERROR IN THIS MANUAL OR PRODUCT.

SPECIFICATIONS AND INFORMATION CONTAINED IN THIS MANUAL ARE FURNISHED FOR INFORMATIONAL USE ONLY, AND ARE SUBJECT TO CHANGE AT ANY TIME WITHOUT NOTICE, AND SHOULD NOT BE CONSTRUED AS A COMMITMENT BY ASUS. ASUS ASSUMES NO RESPONSIBILITY OR LIABILITY FOR ANY ERRORS OR INACCURACIES THAT MAY APPEAR IN THIS MANUAL, INCLUDING THE PRODUCTS AND SOFTWARE DESCRIBED IN IT.

Products and corporate names appearing in this manual may or may not be registered trademarks or copyrights of their respective companies, and are used only for identification or explanation and to the owners' benefit, without intent to infringe.

Contents

Notices.....	iv
Safety information	v
Trademarks	v
License	v
1. Introduction	1
1.1 Package contents	1
1.2 System requirements	1
1.3 Specifications summary	2
2. Xonar Essence STX card layout	4
3. Installing the hardware	6
3.1 Preparing your computer	6
3.2 Installing the Xonar Essence STX card	7
3.3 Connecting to a TV tuner card	8
4. Installing software.....	9
Installing the card driver	9
5. Connecting speakers and peripherals	10
5.1 Connecting digital speaker systems (Home Theater)	10
5.2 Connecting stereo headphones	11
5.3 Connecting 2/2.1 channel speakers.....	12
5.4 Connecting microphone	13
5.5 Connecting Line-In audio sources	14
6. Xonar Audio Center	15
6.1 Xonar Audio Center GUI	15
6.2 Main Setting	17
6.3 Mixer/Volume	25
6.4 Effects	28
6.5 Karaoke.....	30
6.6 FlexBass	31
6.7 Smart Volume Normalization	33
6.8 DS3D GX and DSP Modes	35
6.9 VocalFX	37
7. Troubleshooting and FAQs.....	40
[Troubleshooting]	40
[FAQ]	42

Notices

Federal Communications Commission Statement

This device complies with Part 15 of the FCC Rules. Operation is subject to the following two conditions:

- This device may not cause harmful interference, and
- This device must accept any interference received including interference that may cause undesired operation.

This equipment has been tested and found to comply with the limits for a Class B digital device, pursuant to Part 15 of the FCC Rules. These limits are designed to provide reasonable protection against harmful interference in a residential installation. This equipment generates, uses and can radiate radio frequency energy and, if not installed and used in accordance with manufacturer's instructions, may cause harmful interference to radio communications. However, there is no guarantee that interference will not occur in a particular installation. If this equipment does cause harmful interference to radio or television reception, which can be determined by turning the equipment off and on, the user is encouraged to try to correct the interference by one or more of the following measures:

- Reorient or relocate the receiving antenna.
- Increase the separation between the equipment and receiver.
- Connect the equipment to an outlet on a circuit different from that to which the receiver is connected.
- Consult the dealer or an experienced radio/TV technician for help.

Canadian Department of Communications Statement

This digital apparatus does not exceed the Class B limits for radio noise emissions from digital apparatus set out in the Radio Interference Regulations of the Canadian Department of Communications.

This class B digital apparatus complies with Canadian ICES-003.

Australia statement notice

From 1 January 2012 updated warranties apply to all ASUS products, consistent with the Australian Consumer Law. For the latest product warranty details please visit <http://support.asus.com>. Our goods come with guarantees that cannot be excluded under the Australian Consumer Law. You are entitled to a replacement or refund for a major failure and compensation for any other reasonably foreseeable loss or damage. You are also entitled to have the goods repaired or replaced if the goods fail to be of acceptable quality and the failure does not amount to a major failure.

If you require assistance please call ASUS Customer Service 1300 2787 88 or visit us at <http://support.asus.com>.

Safety information

- Before installing the device on a motherboard, carefully read all the manuals that came with the package.
- To prevent electrical shock hazard or short circuits, switch off the power supply before installing the device on a motherboard or connecting any single cables to the device.
- If the device is broken, do not try to fix it by yourself. Contact a qualified service technician or your retailer.
- Before using the product, make sure all cables are correctly connected. If you detect any damage, contact your dealer immediately.
- To avoid short circuits, keep paper clips, screws, and staples away from connectors, sockets and circuitry.
- Avoid dust, humidity, and temperature extremes. Do not place the product in any area where it may become wet.
- Place the product on a stable surface.
- If you encounter technical problems with the product, contact a qualified service technician or your retailer.



This symbol of the crossed out wheeled bin indicates that the product (electrical and electronic equipment) should not be placed in municipal waste. Check local regulations for disposal of electronic products.

Trademarks

Xonar and ASUS logo are trademarks of ASUSTek Computer Inc. “Dolby” and “Dolby Digital Live”, “Dolby Pro Logic IIx”, “Dolby Virtual Speaker”, “Dolby Headphone” are trademarks of Dolby Laboratories. EAX and A3D are trademarks of Creative Technology Ltd. Microsoft, DirectSound3D, Windows are trademarks of Microsoft Corporation. Other company and product names may be trademarks of the respective companies with which they are associated. ASIO is a trademark and software of Steinberg Media Technologies GmbH

License

Dolby Master Studio driver is manufactured under license from Dolby Laboratories.

1. Introduction

1.1 Package contents

- ASUS Xonar Essence STX PCI Express audio card
- 3.5mm-to-RCA cable x1
- 3.5mm-to-6.3mm adapter x1
- S/PDIF TOSLINK optical adapter x1
- Support CD
- Audio Precision Test Report

1.2 System requirements

- One PCI Express 1.0 (or higher) compatible slot for the audio card
- Microsoft® Windows® 10 / XP (32/64bit) / Vista (32/64bit) / MCE2005
- Intel® Pentium® 4 1.4 GHz or AMD® Athlon 1400 CPU or faster CPU
- 256 MB (or above) DRAM system memory
- 60 MB available HDD space for driver installation package
- CD-ROM drive (or DVD-ROM drive) for software installation
- High-quality headphones, powered analog speakers, or a Dolby Digital decoder, to enjoy the ultra-high fidelity sound of the card

1.3 Specifications summary

Items	Description
Audio Performance	
Output Signal-to-Noise Ratio (A-Weighted)	124dB for Front-out 110dB for Headphone-out
Input Signal-to-Noise Ratio (A-Weighted)	118dB
Output Total Harmonic Distortion + Noise at 1kHz (-3dB)	0.0003% (-110dB) for Front-out 0.001% (-100dB) for Headphone-out
Input Total Harmonic Distortion + Noise at 1kHz (-3dB)	0.0002% (-113dB) for Line-In
Frequency Response (-3dB, 24-bit/96kHz input)	<10Hz to 90kHz
Output/Input Full-Scale Voltage	2 V _{rms} (5.65V _{p-p})
Headphone Impedance	Optimized for 32-600Ω
Bus Compatibility	
PCI Express	- PCI Express Rev. 1.0a specification compatible - Max. full 2.5Gbps bandwidth per direction and optimized latency for high definition audio processing - Compatible with X1, X4, X8, X16 PCI Express slots
Main Chipset	
Audio Processor	ASUS AV100 High-Definition Sound Processor (Max. 192KHz/24bit)
24-bit D-A Converter of Digital Sources	Texas Instruments PCM1792A*1 for Front-Out (127dB SNR, Max. 192kHz/24bit)
High Fidelity Headphone Amplifier	Texas Instruments 6120A2*1 (120dB SNR, 100dB THD +N @ V _{cc} ±12V, R _L =600Ω, f=1kHz)
24-bit A-D Converter for Analog Inputs	Cirrus-Logic CS5361* 1 (114dB SNR, Max. 192kHz/24bit)
Sample Rate and Resolution	
Analog Playback Sample Rate and Resolution	44.1K/48K/96K/192KHz @ 16/24bit
Analog Recording Sample Rate and Resolution	44.1K/48K/96K/192KHz @ 16/24bit
S/PDIF Digital Output	44.1K/48K/96K/192KHz @ 16/24bit, Dolby Digital
I/O Ports	
Analog Output Jack	RCA jack *2 (Front R / Front L) 6.30mm jack*1 (Headphone out)
Analog Input Jack	6.30mm jack *1 (Shared by Line-In/Mic-In)
Digital S/PDIF Output	High-bandwidth Coaxial/TOS-Link combo port supports 192KHz/24bit
Other line-level analog input (for TV Tuner or CDROM)	Aux-In (4-pin header on the card)
Front Panel	Shared by Headphone out / 2 channels out / Microphone in

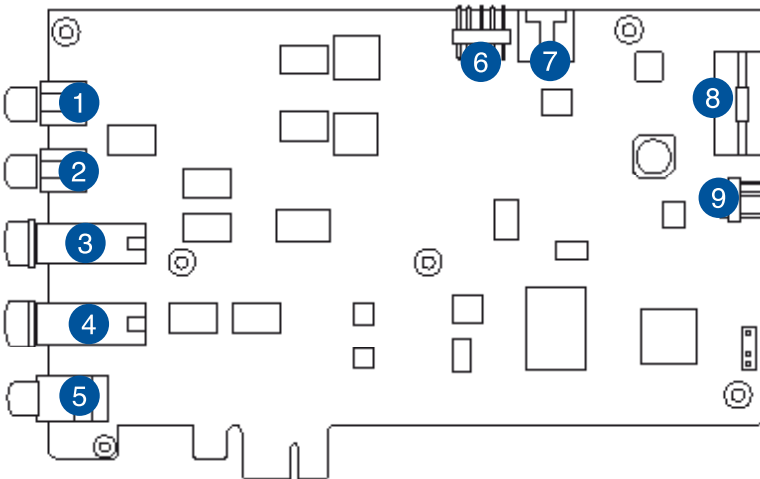
(continued on the next page)

1.3 Specifications summary

Items	Description
Driver Features	
Operating System	Windows® 10 / XP(32/64bit) / Vista(32/64bit) / MCE2005
Dolby® Digital Live	Dolby Digital Live encodes any audio signal on PC in realtime to Dolby Digital (AC3) 5.1 surround sounds to your home theater environment through one single S/PDIF connection
Dolby® Headphone	Dolby Headphone technology allows users to listen to music, watch movies, or play games with the dramatic 5.1-channel surround or realistic 3D spacious effects through any set of stereo headphones.
Dolby® Virtual Speaker	Dolby Virtual Speaker technology simulates a highly realistic 5.1-speaker surround sound listening environment from as few as two speakers.
Dolby® Pro-Logic II	Dolby Pro-Logic II is the well-known technology to process any native stereo or 5.1-channel audio into a 6.1 channel output, creating a seamless, natural surround soundfield.
DirectSound3D Game EXtensions 2.0 & 1.0 (DS3D GX 2.0)	<ul style="list-style-type: none"> - DS3D GX 2.5 supports EAX gaming sound effects and DirectSound 3D hardware enhanced functions for more games on Windows Vista & XP. (DirectX/DirectSound 3D compatible) - DS3D GX 2.5 adds latest VocalFX voice effects for online gaming or chatting.
VocalFX™	<p>Xonar Essence STX provides VocalFX, the latest vocal effect technologies for gaming and VoIP, including:</p> <ul style="list-style-type: none"> - VoiceEX: produces vivid environmental reverberation for your voice to others in EAX games - Local VoiceEX: enables yourself to hear the vivid environmental reverberation by your speakers - ChatEX: emulates different background environment effects when you chat online - Magic Voice: changes your voice pitch to different types (Monster/Cartoon...) for disguising your real voice or just for fun in online chatting
Smart Volume Normalizer™	Normalizes the volume of all audio sources into a constant level and also enhances your 3D sound listening range and advantages in gaming
Karaoke Functions	Music Key-Shifting, Vocal Cancellation, and Microphone Echo effects like professional Karaoke machine
FlexBass™	Professional Bass Management/Enhancement system
Xear 3D™ Virtual Speaker Shifter	Virtual 7.1 speaker positioning
Other Effects	10-band Equalizer/27 Environment Effects
3D Gaming Sound Engines/APIs	DirectSound3D® GX 2.5 & 1.0, EAX®2.0&1.0, DirectSound® HW, DirectSound SW, OpenAL generic modes, 128 3D sounds processing capability
ASIO 2.0 Driver Support	Supports 44.1K/48K/96K/192KHz @16/24bit with very low latency

* Specifications are subject to change without notice.

2. Xonar Essence STX card layout



No	Item	Description
1	Front Right Out port	Connect the Right audio cable (red) from your 2/2.1 channel speakers to this port. For multi-channel speaker systems, connects to the Front Right In port on the powered speakers.
2	Front Left Out port	Connect the Left audio cable (white) from your 2/2.1 channel speakers to this port. For multi-channel speaker systems, connects to the Front Left In port on the powered speakers.
3	Headphone Out port	Connect your headphones to this port. <i>NOTE:</i> <ul style="list-style-type: none"> - <i>DO NOT</i> connect your speakers to the headphone out port. The possible high driving power may cause damage to your speakers. - To prevent damage to your headphone, before the connection, adjust the headphone impedance settings in the Xonar Essence STX Audio Center to match your headphone impedance.
4	Microphone In port	Connect your external PC microphone to this port for voice input. Built-in high-quality Microphone pre-amplifier.

(continued on the next page)

No	Item	Description
4	Line In port	Connect analog devices like MP3 players, CD players, music synthesizers and other line-level sound sources to this 6.3mm port for audio recording or processing. (Through Ultra-high fidelity 118dB SNR A-D converter)
5	S/PDIF Out port	Coaxial and optical TOSLINK combo digital output port. Connects to external digital decoder or digital speaker systems, Home Theater systems, AV receivers for outputting digital audio including PCM, Dolby Digital, DTS, WMA-Pro, etc.
6	Front panel audio header	Connect one end of the front panel audio cable to the front panel audio header on the Xonar Essence STX card, with the other end to the chassis-mounted front panel audio I/O module.
7	Aux Input Header	Usually connects to the Analog Audio output of TV tuner card or other sound source inside your PC system. (To monitor your TV tuner card's audio from this Aux-In, you must enable the "monitor" function for Aux-In in the Xonar Essence STX Audio Center's recording mixer.)
8	Power connector	Connects to the power cable of your power supply unit.
9	S/PDIF Out header	Connects to a graphics card with HDMI output. <i>NOTE: When using Dolby Digital Live on S/PDIF output, make sure the connected graphics card is capable of decoding DDL; otherwise, there will be no audio output from the graphics card's HDMI port.</i>

3. Installing the hardware

3.1 Preparing your computer

Before you proceed with the following installation steps, it is recommended that you disable the onboard audio device in the BIOS settings, or uninstall any other sound cards on your PC.



For BIOS setting or uninstallation of other sound cards, refer to the user manuals of your motherboard and sound cards.

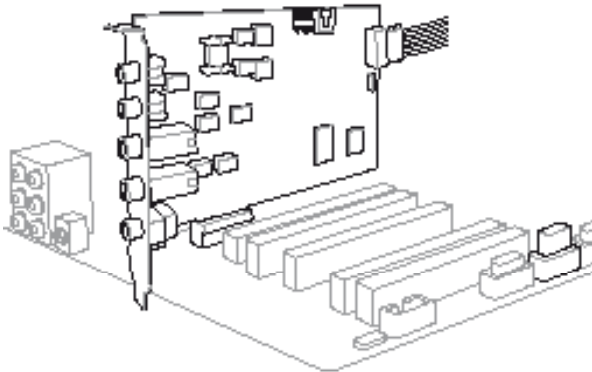
1. Power OFF the computer, the monitor, and all other peripheral devices connected to your computer.
2. Unplug the computer power cord from your computer and power outlet.
3. Touch the metal back or side panel of the computer to avoid static electricity.
4. Remove the chassis cover.
5. Remove the metal bracket from an available PCI Express x1 slot for the Xonar Essence STX audio card.
6. Carefully insert the audio card into the PCI Express x1 slot. Ensure the audio card sits properly in place.

3.2 Installing the Xonar Essence STX card

1. Secure the audio card with screws and the metal bracket.
2. Connect the 4-pin power cable of your power supply unit to the power connector of the audio card.
3. Put back the chassis cover.
4. Reconnect all cables.
5. Plug the power cord to the computer and to a power outlet.
6. Power ON the computer.



The PCI Express high-quality audio card requires additional power from your computer. If the power cable is not connected properly, the audio card will not work at all.



3.3 Connecting to a TV tuner card

1. If you have a traditional PCI or PCI Express TV tuner card on your PC, you may need to connect it to the Xonar Essence STX card to send the tuner card's sound to your PC speakers.
2. Secure the PCI/PCI Express TV tuner card and screw it into the back-panel.
3. Connect the audio output header from the TV tuner card to the Aux-In header of the Xonar Essence STX card.



For optimum TV audio quality, Xonar HDAV uses ADC recording to digitize the signal and loops it back to DAC playback. Select Aux-In as the recording source in the Xonar Essence STX Center's recording mixer and enable the monitoring button to pass this signal to the audio output. Using this setup, you can even turn on sound effects such as Pro-Logic IIx to expand the stereo TV audio to 5.1 or 7.1 channel surround sound. TV audio on your PC will become even better than on your TV set.

4. Installing software

Installing the card driver



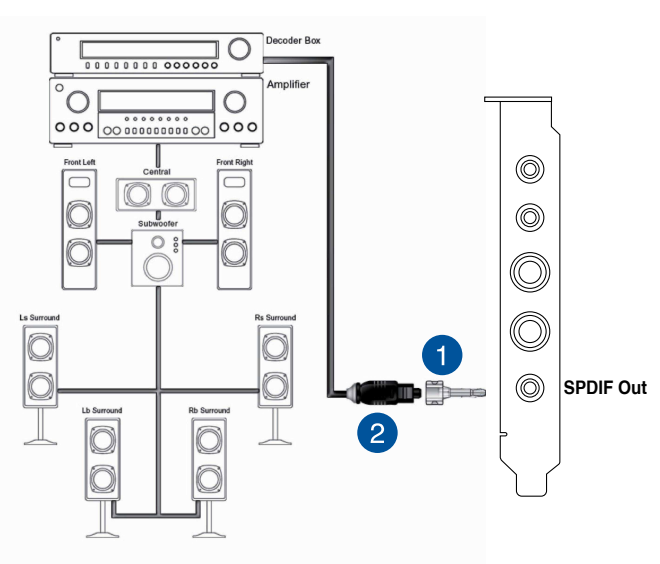
Ensure that you have installed the VGA card driver before installing the Xonar Essence STX driver. Otherwise, driver installation error may occur.

1. After you have installed the Xonar Essence STX card, turn on your computer. Windows® automatically detects the HDAV card and searches for device drivers. When prompted for the drivers, click **Cancel**.
2. Insert the support CD into the optical drive. If Autorun is enabled in your system, the setup starts automatically. If not, run **setup.exe** from your support CD.
3. The installation program will remind you to make sure you have connected the additional power cable from your power supply unit to the card. If the power cable is not connected properly, the card will not work at all. If it has not been done, turn off the computer to install the power cable before you go on the installation process.
4. Follow the onscreen instructions to complete the installation. Read the **"END USER LICENCE AGREEMENT"** in the process and make sure you understand and accept it before you continue the installation. When the installation finishes, you may be prompted to restart your computer. You can choose to restart the computer later if desired.

5. Connecting speakers and peripherals

5.1 Connecting digital speaker systems (Home Theater)

The Xonar Essence STX supports Dolby Digital Live technology, which transcodes any audio, including games and music, into industry-standard Dolby Digital surround bit-streams. This makes playback through your home theater system possible, creating an immersive and impressive cinema surround sound experience. A single digital cable connection can carry high-quality Dolby Digital audio from any of your PC audio sources to any digital speakers or AV Receivers with Dolby Digital 5.1 decoding capabilities.

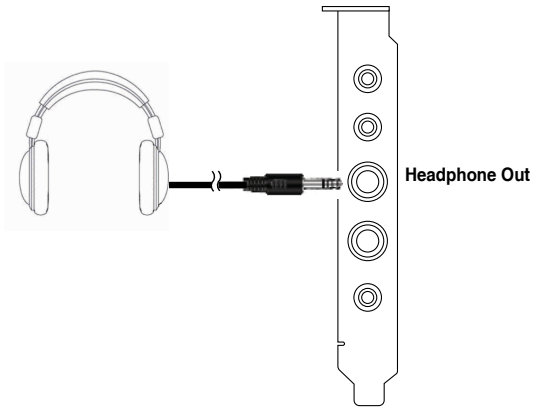


No	Item	Description
1	Optical adapter	Plug the optical TOSLINK adapter into the S/PDIF-Out combo connector.
2	Optical cable	Connect your decoder's S/PDIF-In port to the optical adapter with the TOSLINK optical cable.



You can also use a coaxial cable for a S/PDIF connection. Just plug the coaxial RCA male connector to the S/PDIF-Out combo jack and connect the other end into the coaxial S/PDIF input on your decoder.

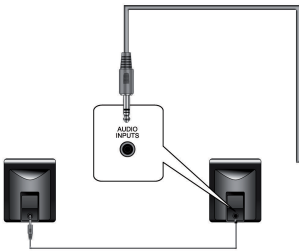
5.2 Connecting stereo headphones



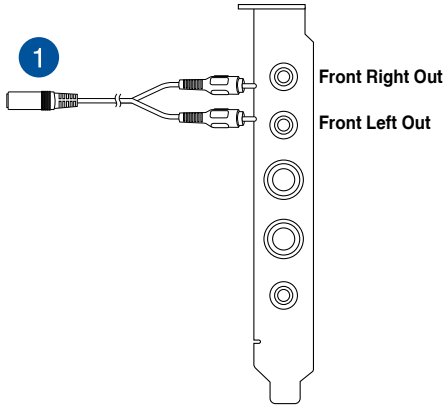
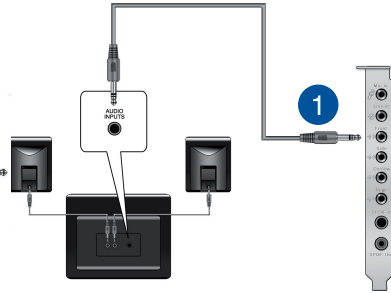
The Headphone Out port has a built-in high-quality amplifier to drive headphones. Connect your stereo headphones to the Headphone Out port on the Xonar Essence STX card.

5.3 Connecting 2/2.1 channel speakers

2 Speakers

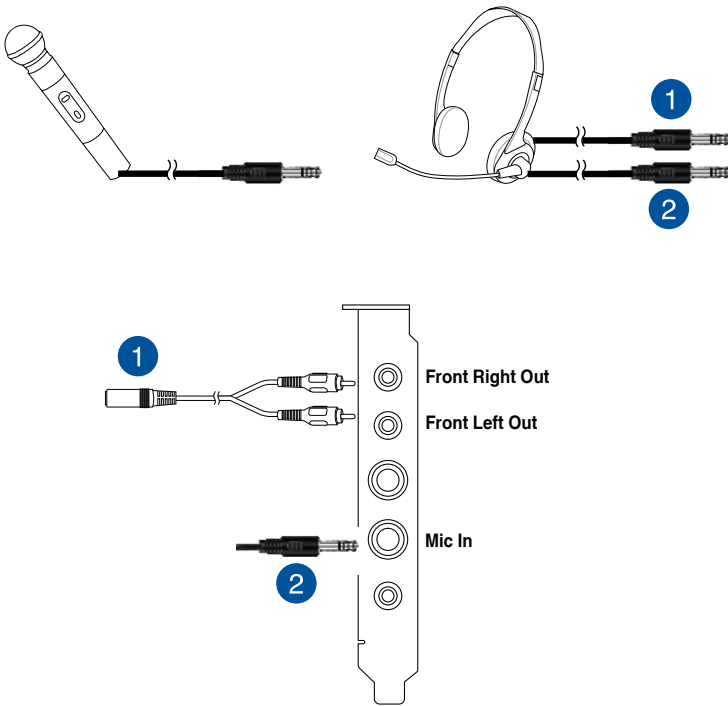


2.1 Speakers



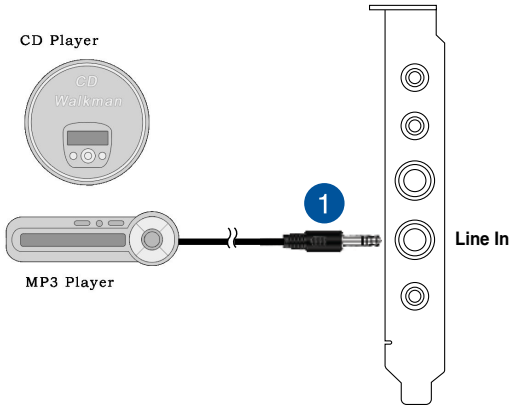
No	Item	Description
1	Front Left/Right Out	The Left/Right Front Out ports have a built-in high-quality amplifier to drive headphones. Connect the 2/2.1 speaker set's 3.5mm plug to the bundled RCA-to-3.5mm Y cable, and then connect the Left/Right ends to the Front Left/Right Out ports on the Xonar Essence STX card.

5.4 Connecting microphone



No	Item	Description
	Front Left/Right Out port/Headphone port	Connect the headphone's 3.5mm plug to the bundled RCA-to-3.5mm Y cable, and then connect the Left/Right ends to the Front Left/Right Out ports on the Xonar Essence STX card.
1	Microphone Input port	Connect your external PC microphone to this port by using the bundled 6.3mm-to-3.5mm adapter for voice communication, recording, or karaoke.

5.5 Connecting Line-In audio sources



No	Item	Description
1	Line Input Jack	Connect the CD/MP3 Player or any other Line level analog audio sources to this Line-In port by using the bundled 6.3mm-to-3.5mm adapter for sound recording or real-time Dolby sound processing through the Monitoring path (See the Mixer section of the driver guide).

6. Xonar Audio Center

6.1 Xonar Audio Center GUI

1. After the driver installation is complete and your computer has been rebooted, you will find the Xonar Audio Center's icon in the system tray on the bottom right-hand corner of the screen. Double click this icon to open the Xonar Audio Center utility.



If the icon could not be found in the system tray, launch the Xonar Audio Center from the Windows desktop by clicking **Start > All Programs > ASUS Xonar Essence STX Audio > Xonar Essence STX Audio Center**.

2. The Xonar Audio Center is the Graphic User Interface (GUI) for the Xonar Essence STX driver. You can control the functions and features of the Xonar Essence STX driver on the Xonar Audio Center. The following picture shows a basic overview of the Xonar Audio Center. The following sections of this manual will describe its functions in more detail.

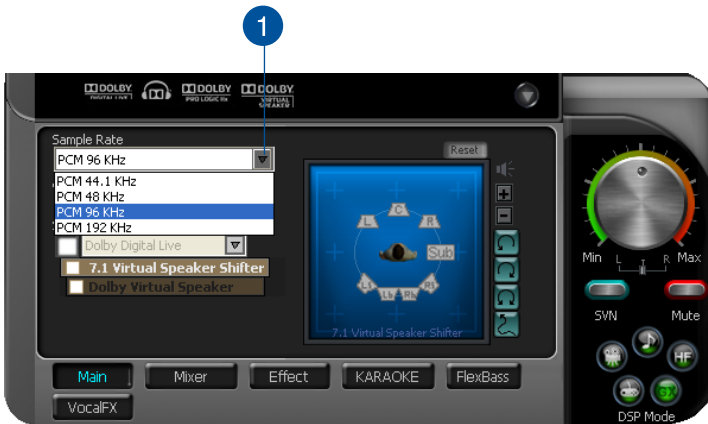


No	Item	Description
1	Support link	Clicking this button will lead you to the ASUS official website.
2	Display Area	This display area shows the 10-band signal meter, volume level, and the status of the Dolby/DTS technologies, EQ, and DSP modes. Note: this area just displays information, but is not used to alter settings.
3	Setting Menu Panel	This panel gives access to setting tabs, including Main Settings, Mixer/volume, Effects, Karaoke, FlexBass, and VocalFX.
4	Information icon	Clicking this icon will pop up driver's Information window.
5	Menu Open/Close	Clicking this button will move the display area and reveal the configuration area below. Clicking it again will move the display area back down.
6	Master Volume	This rotary knob controls the master playback volume. Drag the small circle inside it to change the volume level.
7	Mute Button	Click this button to mute audio playback; it will display a red light when playback is muted.
8	SVN Button	Click this button to enable the "Smart Volume Normalization" feature for constant volume from all playback sources. It will display a blue light when enabled.
9	DSP Mode	These 4 buttons give access to quick sound effects combinations for Music, Games, DVD Video, and effect-free (Hi-Fi) modes. <i>NOTE: Default DSP Mode is OFF.</i>

6.2 Main Setting

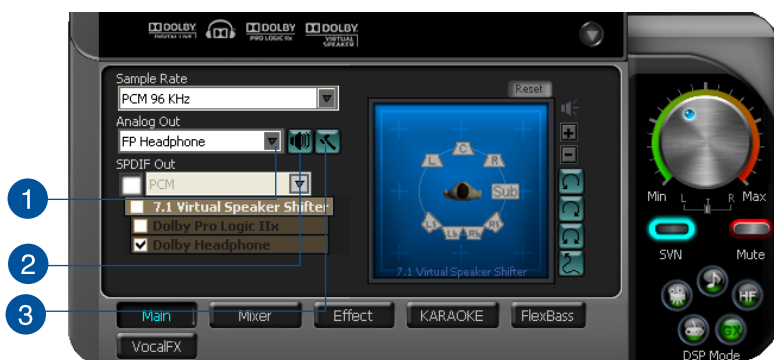
6.2.1 Sample Rate

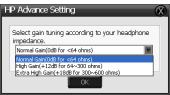
The sample rate determines the number of audio samples per second that the Digital-to-Analog Converters (DAC) and S/PDIF digital interface will output. The Xonar Essence STX card can support sample rates up to 192KHz (44.1K, 48K, 96K, 192KHz). Usually audio CDs and MP3 files are 44.1KHz; DVD-Video uses 48KHz; DVD-Audio or other HD media may contain 96KHz or 192KHz high-definition audio content. Please select the corresponding sample rate for your playback sources to get the best audio fidelity. Even if your setting differs from the audio source's sample rate, the Xonar Essence STX engine will do super high fidelity sample-rate-conversion with a double floating-point filter, which can reduce total harmonic distortion (THD+N) by -140dB.



No	Item	Description
1	Sample Rate	<p>Select the sample rate that corresponds to (or exceeds that of) your playback sources, for optimal audio fidelity. The Xonar Essence STX card supports sample rates up to 192KHz (44.1K, 48K, 96K, 192KHz). Typical values:</p> <ul style="list-style-type: none">-Audio CD, MP3, WMA, Wave files are 44.1KHz;-The audio of DVD-Video is 48KHz;-DVD-Audio or other HD media may contain 96KHz or 192KHz high-definition audio content.

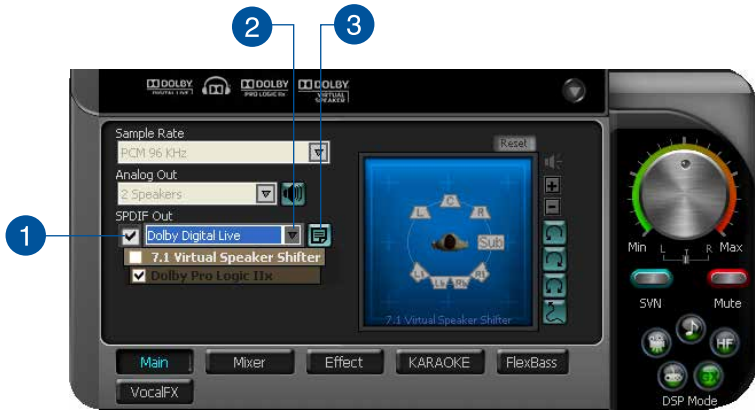
6.2.2 Analog Out mode




No	Item	Description
1	Analog Out	The Analog Out setting is used to match your actual speaker setting, such as headphones and 2/2.1 speakers. Xonar Essence STX will play the channels and do the proper 3D/ Dolby sound processing accordingly. Select the correct speaker type for your connected speakers.
2	Speaker Test	Click this button to show the speaker test window in the right pane. Click the “play” button to test each speaker one by one or click each speaker manually to test.
3	HP Advanced Setting	Clicking this button allows you to select the gain tuning according to your headphone impedance. The setting is also available for FP Headphone. 

6.2.3 SPDIF Out/DDL

Xonar Essence STX is capable of outputting Dolby Digital Live, which is a real-time encoder that transcodes any audio, including games and music, into industry-standard Dolby Digital bit-streams on-the-fly. This is ideal for playback through a home theater system, creating an impressive cinema surround sound experience. It enables a single digital connection to carry high quality Dolby Digital surround audio from your PC to digital speakers and AV Receivers.



No	Item	Description
1	S/PDIF Out enable/disable	Click this check box to enable S/PDIF output.
2	S/PDIF Output Formats/Functions	This pull-down menu allows you to select one of the following four formats: <ul style="list-style-type: none"> -PCM (Pulse Code Modulation, which is a typical raw audio data format.) -Dolby Digital Live real-time 5.1 ch encoding
3	Dobly Digital Live advanced upmixing option	This advanced setting will automatically upmix stereo (2ch) content to 5.1 channel surround with Dolby Pro-Logic II when using Dolby Digital Live output. 

6.2.4 Audio Channels (For Vista only)

This setting only appears in Windows Vista. Vista will deliver the audio channels to the audio driver according to this setting, no matter what the original audio content is or how many channels they have. Therefore, you need to set this in accordance with your audio content before you play it. Please note that this setting is synchronized with Vista's system speaker configuration and changing the setting during playback will cease the audio playback program. You may have to restart the program after the change. It's recommended that you close all playing programs before you change the setting.

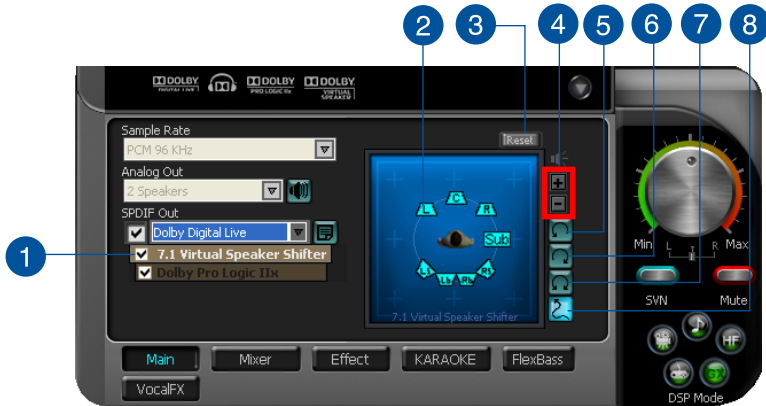


No	Item	Description
1	Audio Channels	<p>Here are some typical suggestions:</p> <ul style="list-style-type: none"> -MP3, WMA, AAC, CD, VCD, 2D games => 2 channels -DVD-Video with Dolby Digital or DTS 5.1 => 6 channels -DVD-Video with Dolby Digital EX or DTS ES => 8 channels -3D games => 8 channels

6.2.5 7.1 Virtual Speaker Shifter

The 7.1 Virtual Speaker Shifter has the following major features:

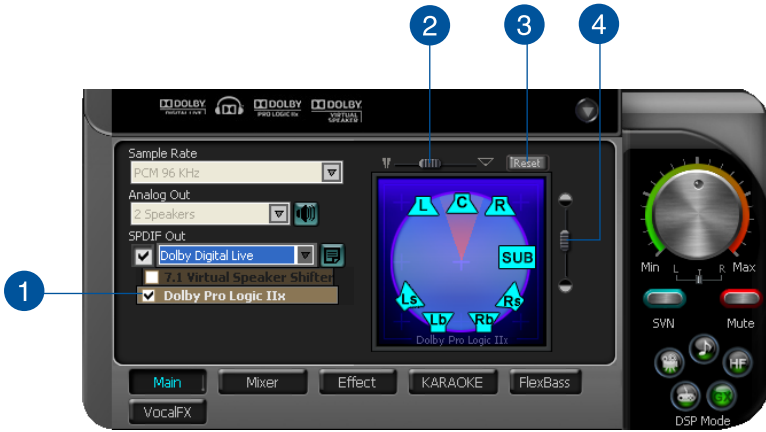
- Expanding/upmixing audio to 7.1-channel surround sound
- Virtualizing 7.1 surround sound over any set of speakers
- Shiftable virtual speaker positioning allows you to adjust the best sound field easily without moving physical speakers and wires



No	Item	Description
1	Shifter enable/disable	Click this check box to enable the 7.1 Virtual Speaker Shifter. Clicking the text bar will switch the right window to the Speaker Shifter page for manual adjustments. <i>Note: The setting will remain when a different Analog Output is selected.</i>
2	Drag speaker or listener	You can drag each speaker or listener to a different relative position “virtually” using only your mouse. The Xonar Essence STX card will process it and virtualize each speaker position in real-time. The Subwoofer has no directional sounds, and hence can be moved only closer or further away.
3	Reset	Reset all Speaker Shifter settings to the defaults.
4	Increase/decrease volume	Click + to increase volume (move speakers closer); click – to decrease volume (move speakers further away)
5	Counter-clockwise	Make all speakers (except Subwoofer) rotate counter-clockwise
6	Clockwise	Make all speakers (except Subwoofer) rotate clockwise
7	Manual Rotation	Manually drag and rotate all speakers (except Subwoofer)
8	Manual Drag Mode	This is the default mode that allows you to manually drag each speaker or the listener with your mouse.

6.2.6 Dolby Pro-Logic IIx

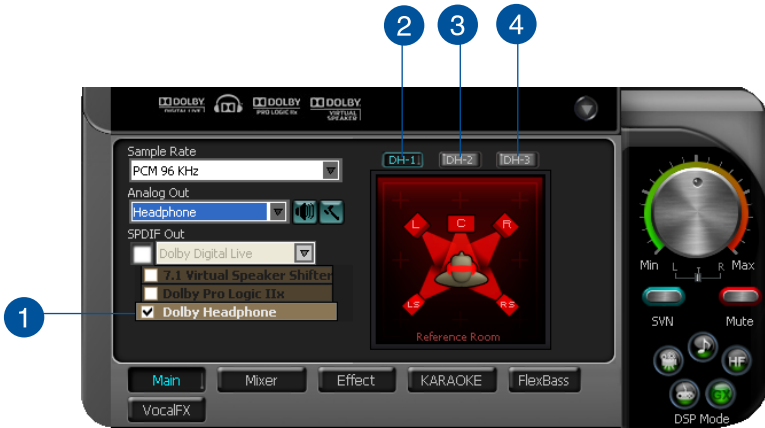
Dolby Pro-Logic IIx is a 7.1 surround upmixing technology and is widely used in home theater systems, TVs, game consoles, and car audio systems. It can expand stereo audio, such as MP3, CD, and TV programs into immersive 5.1 or 7.1-channel surround.



No	Item	Description
1	Dolby Pro-Logic IIx enable/disable	Click this check box to enable Dolby Pro-Logic IIx. Clicking the text bar will switch the right window to the Pro-Logic IIx page for manual adjustments.
2	Center Width	This parameter is used to set the spread of the center, mainly for the vocal signals of songs and music. Drag the scroll bar to the left to centralize the vocal signal. Drag to the right side to widen the vocal sound range.
3	Reset	Reset all settings to the defaults.
4	Dimension	The dimension parameter fades sounds to the front or rear of the listener.

6.2.7 Dolby Headphone

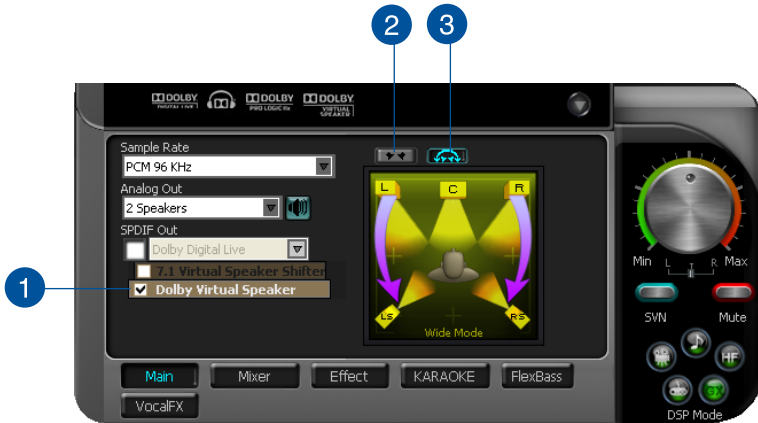
Dolby Headphone creates a stunning multi-channel surround experience over ordinary stereo headphones for playing 3D games, watching 5.1 DVD movies, and listening to music. Dolby Headphone produces surround sound cues so realistic that you will believe you are listening over speakers in a well-controlled studio. Dolby Headphone can also improve listening comfort and reduce "listener fatigue" from long listening over headphones.





No	Item	Description
1	Dolby Headphone enable/disable	Click this check box to enable Dolby Headphone. Clicking the text bar will switch the right window to Dolby Headphone page for manual adjusting. <i>Note: 7.1 Virtual Speaker Shifter and Dolby Pro-Logic IIx can be selected only when Dolby Headphone is enabled.</i>
2	DH1	Dolby Headphone (DH) provides three room filters that may be used with any type of audio. They differ in the sense of the "spatial dimension" they impart. DH1—Reference Room: Small, acoustically damped room.
3	DH2	DH2—Livelier Room: More acoustically live than DH1
4	DH3	DH3—Larger Room: Larger room than DH1; more distant and diffused effect.

6.2.8 Dolby Virtual Speaker

Dolby Virtual Speaker technology simulates a 5.1-speaker surround sound listening environment from as few as two speakers. Dolby Virtual Speaker also creates a wider two-channel environment during playback of stereo CDs and MP3 content, and when combined with Dolby Pro Logic® II processing, delivers a virtual 5.1-channel surround listening experience from any high-quality stereo source.

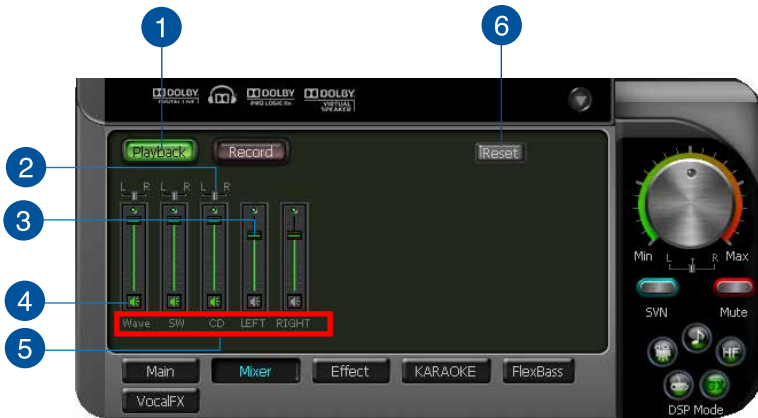


No	Item	Description
1	Dolby Virtual Speaker enable/disable	Click this check box to enable Dolby Virtual Speaker. Clicking the text bar will switch the right window to a Dolby Virtual Speaker page for manual adjusting.
2	Reference Mode	Dolby Virtual Speaker provides two modes of virtualization: The first is Reference mode, which virtualizes the missing speakers as in the following picture. 
3	Wide Mode	Wide mode virtualizes the necessary speakers and enhances the surround experience as in the following picture. 

6.3 Mixer/Volume

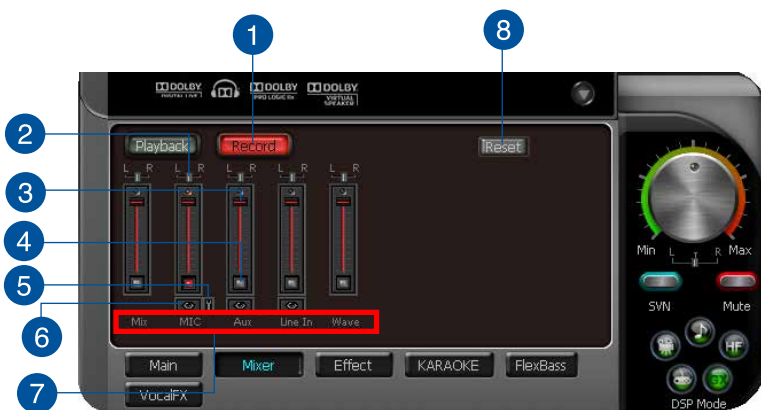
The mixer page is designed to control the volume for playback and recording on the Xonar Essence STX. In addition, the Xonar Essence STX also provides a high-quality digital monitoring function for hearing the recorded audio from the speakers. You can also process the input signals with all playback sound effects such as Dolby and DTS technologies.


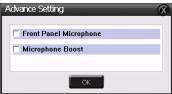
6.3.1 Playback Volume



No	Item	Description
1	Playback volume tab	Click this button to show the playback volume page.
2	Left / Right balance	The horizontal slider controls the volume between the left and right channels.
3	Volume slider	Drag this slider down to decrease the volume; drag it up to increase the volume. The tool-tip reveals the percentage number from 1 to 100 in terms of the full scale level.
4	Mute button	Click this button to mute the audio channel; click this button again to restore the audio output.
5	Source / path name	This shows the source name for each volume control slider, including: <ul style="list-style-type: none"> - WAVE: All digital audio sources except MIDI files - SW: Software Synthesizer; control the playback volume of the MIDI files - CD: CD-ROM digital playback (CD-DA) volume control - LEFT, RIGHT...: the volume control for each speaker/channel <p><i>NOTE: Windows® Vista does not support WAVE, Synthesizer and CD-In volume controls.</i></p>
6	Reset	Reset all volume controls to the default settings

6.3.2 Recording/Monitoring Volume



No	Item	Description
1	Recording Volume Tab	Click this button to show the recording volume page.
2	Left/Right balance	This horizontal slider controls the volume between the left and right channels.
3	Recording volume slider	Drag this slider down to decrease the recording volume; drag up to increase the recording volume. The tool-tip reveals the percentage number from 1 to 100 in terms of the full scale level.
4	Recording Selector button	Click this button to select the path/source you are going to record. Note that the recording function on Windows is a one-path selector. So, you can select only one default recording source at a time. You may have to restart the recorder program if you switch to a different source. (Note: On Vista, some application programs may allow you to select the recording device/path in the recording programs themselves.)
5	Microphone-In Advanced Setting	<p>Click this button  to open the advanced settings for the Microphone-In:</p>  <p>Enabling "Microphone Boost" will increase a volume gain to boost microphone input signals. If you connect your microphone to the front panel audio module, enable "Front Panel Microphone". For typical low-cost PC microphone, it's recommended to enable this function.</p>

(continued on the next page)

No	Item	Description
6	Monitoring button	<p>Click this button to monitor and loopback recording audio to outputs (PC speakers). Therefore, the recording volume will influence the monitoring signals from speaker outputs. The audio will be mixed into the streams you are playing out from your PC and all DSP effects will be applied to the source, too. A typical benefit is to apply Dolby Pro-Logic IIx 7.1-ch spreading for your TV audio, CD, MP3, or stereo game console audio from Wii, Xbox, PS2/PS3/PSP, etc. To apply Dolby Virtual Speaker is suitable for two-speaker environment.</p> <p><i>NOTE: When the monitoring function is enabled, audio output from HDMI output is disabled.</i></p>
7	Source / path name	<p>This shows the source name for each volume control slider, including:</p> <p>S/PDIF-In: S/PDIF digital input source</p> <p>Mix: Stereo Mix which will record MIC, AUX, and digital WAVE audio you are playing on PC</p> <p>Aux: recording from Aux-In for typically TV-tuner card audio or other sound sources</p> <p>Line-In: recording from Line-in jack for external audio devices</p> <p>WAVE: recording from digital wave audio you are playing on PC (Note: Windows Vista doesn't support WAVE recording.)</p>
8	Reset	Click to reset all volume controls to the default settings.

6.4 Effects

6.4.1 Environment Effects

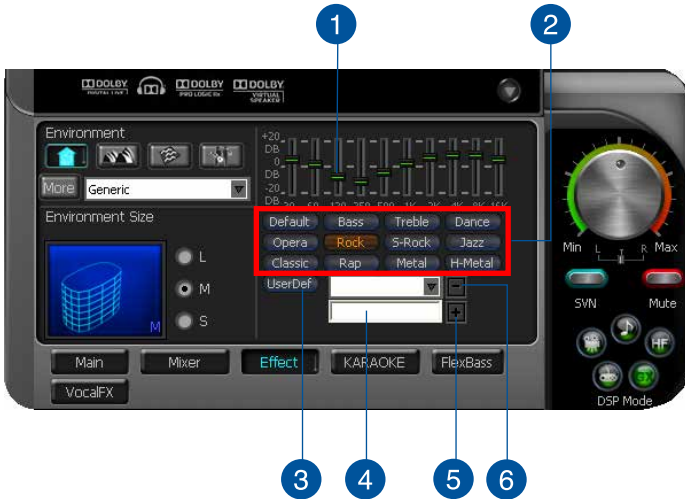
Environment effects can be used to create realistic listening experiences that mimic different environments. There are a total of 27 environment options, which can be applied to all 2D sound sources, like music.



No	Item	Description
1	Default environments	These four buttons activate Bathroom, Concert hall, Underwater, and Music Pub environments, respectively.
2	More options	Clicking this button will apply the environment effect that you select from the pull-down menu on the right side. There are another 23 options in this menu.
3	Environment size	There are three size settings for each environment: Large, Medium, and Small.

6.4.2 10-Band Equalizer

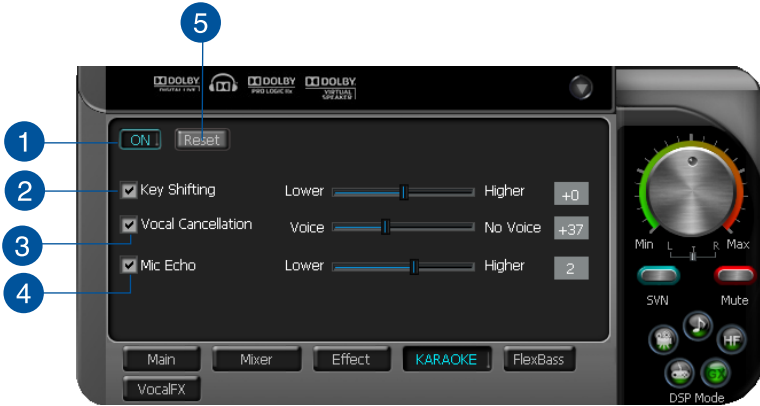
The equalizer can modify the audio output for different frequencies, and be used to compensate for deficiencies in your speakers/systems. There are 12 default patterns and you can also make your own settings.



No	Item	Description
1	Default equalizer options	There are 12 available equalizer patterns. Click one to apply it.
2	Equalizer slider	Adjust the gain for each band (30~16KHz)
3	User Defined	You can click this button to apply your own defined parameters saved in the pull-down menu.
4	Save name	Key in a name for your own "User Defined" equalizer setting
5	Add / save	Click this "+" button to save the parameters into User Defined list
6	Delete	Click this "-" button to delete the parameters from User Defined list

6.5 Karaoke

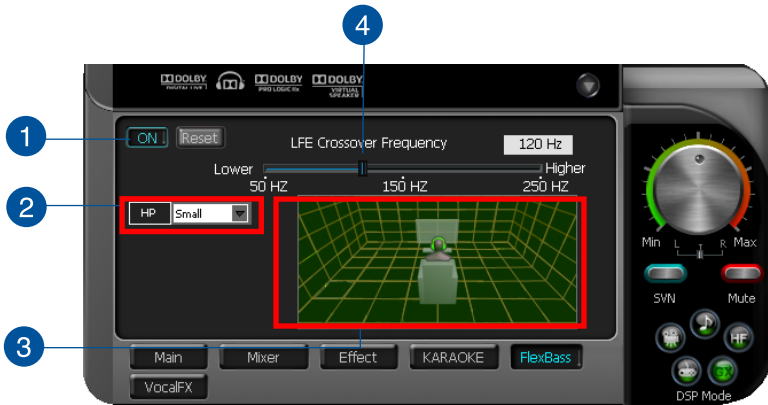
The Xonar Essence STX provides powerful features for Karaoke, including Key-Shifting, Vocal Cancellation, and Microphone Echo. Key-Shifting can change the pitch of Karaoke background music, and Vocal Cancellation can reduce the original vocal in songs and keep the music and symphony for karaoke.



No	Item	Description
1	On/Off	Click the switch to turn on or off the functions on this page.
2	Key-Shifting	Check the box to enable or disable the key shifting feature for music playback from 4 semitones below, to 4 semitones above.
3	Vocal Cancellation	Checkbox to enable or disable the vocal cancellation function and adjust the voice cancellation level from 0 to +100. +100 will eliminate most original vocals (default value is 50).
4	Mic Echo	Select the Mic Echo function and adjust the gain for echo signals (30~16KHz)
5	Reset	Reset all settings to the default.

6.6 FlexBass

FlexBass, an advanced bass management and enhancement mechanism, allows you to select each satellite speaker's type for optimal sound performance from the speakers. (Small: common speaker that cannot produce low frequencies; Large: wide-band speakers that can produce low frequencies well). It comes with an adjustable crossover frequency for the boundary of the bass signals. FlexBass will filter out the bass signals from small speaker channels and redirect them all to the subwoofer or Large speakers.



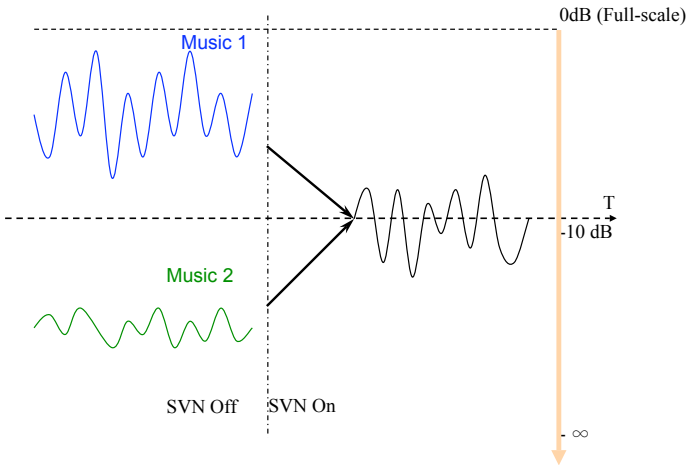
No	Item	Description
1	On/Off	Click this switch to turn on or off all functions on this FlexBass page.
2	Small / Large speaker option	<p>Select the speaker type that you connected. If your speaker type cannot perform low-frequency signals (bass), select “Small” speaker type and Xonar Essence STX will filter out the bass signals and send them to the subwoofer channel. If those speakers are full-range, you can select the “Large” speaker type.</p> <p>Note: Usually, low-cost PC’s 2-channel speakers are small-type speakers. Refer to the speaker’s specification. If you have any questions, consult your speaker vendor. However, common 2.1 speakers with a subwoofer should be categorized as Large speakers because the subwoofer can redirect the bass signals inside the two channels to the subwoofer speaker automatically.</p>

(continued on the next page)

No	Item	Description
3	Picture for Small/ Large speaker	Colors for small/large speakers are different. Orange: large speakers Green: small speakers
4	LFE Crossover Frequency	Adjusts the cut-off frequency (20~250Hz) for LFE (low-frequency effects) signals. Xonar Essence STX will filter out the bass signals below the crossover frequency from small speaker channels and forward them to the subwoofer. The higher the crossover frequency, the more bass signals will be subtracted.

6.7 Smart Volume Normalization

Smart Volume Normalization™ (SVN) automatically keeps all music or video/TV audio output at a constant level to reduce manual adjustment hassles inherent with sound sources of different loudness. It allows you to listen to various content, like MP3, TV program, DVD video and even games with consistent sound level. The following graph shows how different signals 1 & 2 will become the same level (for example, 10dB below full scale) after you turn on SVN. Please note that for lower volume music 2, it will become louder when you turn on SVN; and for higher volume music 1, it will become quieter.





No	Item	Description
1	SVN On/Off	Click this button to enable SVN. This button is outlined blue when active.
2	SVN blue light	When SVN is enabled, the master volume knob will be illuminated by a blue light. It will be lit red if the volume is muted.
3	SVN display	When SVN is enabled, "Smart Volume" will be lit up at the bottom of the volume meter and the volume meter will show the level.

6.8 DS3D GX and DSP Modes

Xonar Essence STX is introducing an innovative technology –DirectSound 3D Game Extensions v1.0 (DS3D GX 1.0)- to restore DirectSound 3D Hardware acceleration mode and its subsidiary EAX effects on Windows Vista for 3D games. Unlike some proprietary API like OpenAL, DS3D GX doesn't require games to support OpenAL API. All existing games compatible with Microsoft DirectX and DirectSound 2D/3D will be supported with DS3D GX technology. Before you start EAX and DS3D HW games, enable DS3D GX on the Xonar Audio Center, and disable the function after the games.

Supports latest DS3D GX 2.0 for gaming on Vista & XP

DS3D GX 2.0 not only revives EAX and DirectSound HW effects, but also allows you to run EAX HD 5.0 games on both XP and Vista. It provides the best compatibility with existing DirectX games. GX2.0 also adds innovative VocalFX voice effects for existing EAX games or VOIP applications.

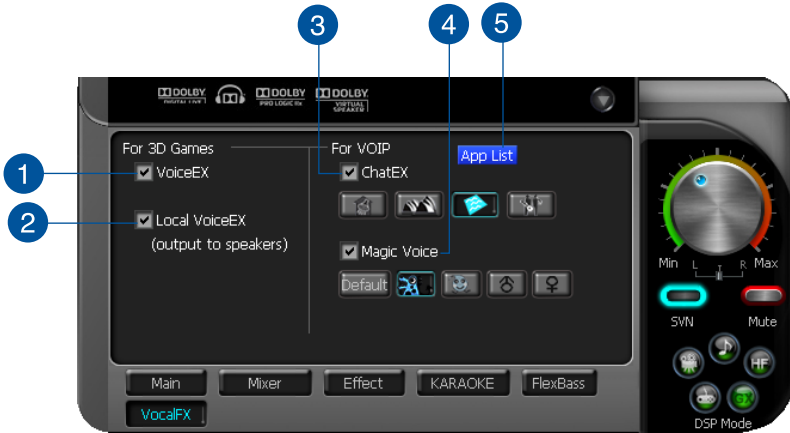
Besides the abundant sound effects described above, the Xonar Essence STX also provides quick Digital Sound Processing modes which are configured for typical applications including Music, Movies, and Games over different output speaker types. In addition, Xonar Essence STX also offers a Hi-Fi mode for hi-fidelity playback without any effect processing to keep the original audio fidelity. Every time you turn on Hi-Fi mode, Xonar HDAV 1 will clear all sound effects. It's also recommended to use Hi-Fi mode for audio quality tests (using RMAA software or another machine-based measurement). Use the DSP mode button as the quick setup if you don't wish to know the details of the effect setup. (Note: no sound effects will be applied to high-definition 96KHz/192KHz content.)



No	Item	Description
1	GX Mode	DirectSound 3D Game Extensions mode to support EAX and DirectSound 3D Hardware extensions for lots of DirectX/ DirectSound3D games on Windows Vista.
2	Hi-Fi Mode	This mode is set for Hi-Fidelity playback, where all effects will be cleared to keep the original digital data and analog output quality as high as possible.
3	Music Mode	This mode is set for Music playback.
4	Movie Mode	This mode is set for DVD Movie playback.
5	Game Mode	This mode is set for Games.

6.9 VocalFX

VocalFX is an innovative voice processing technology to let your voice get into the realistic game landscape (VoiceEX) or to emulate the background scenes in online chat (ChatEX). It also allows you to change your voice pitch to disguise who you are (Magic Voice). These features dramatically increase the fun for voice communication on PC.



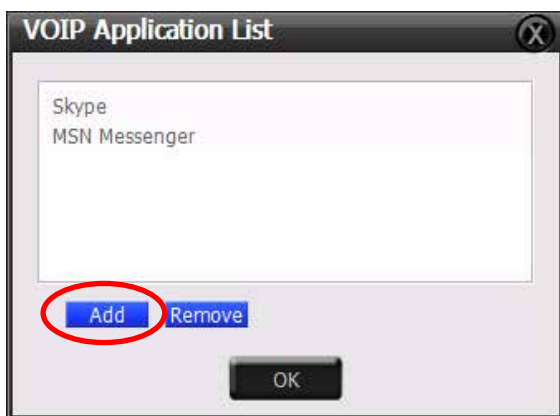
No	Item	Description
1	VoiceEX	It produces realistic and dynamic environmental reverberation for your voice in 3D gaming communication.
2	Local VoiceEX	It produces realistic and dynamic environmental reverberation for your voice in 3D gaming communication. (You can hear your voice form speakers)
3	ChatEX	It emulates different background environment effects when you chat online.
4	Magic Voice	Changes your voice pitch to different types for disguising your real voice or just for fun in online chatting.
5	App List	You can add VOIP application into VOIP application List.

For 3D Games

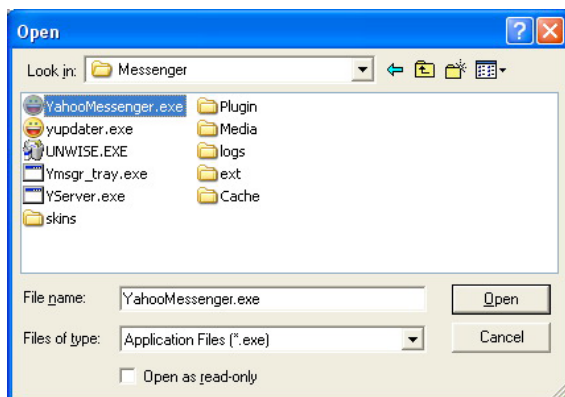
1. Check the check box of VoiceEX and Local VoiceEX.
2. Make sure you and your team member can talk to each other in the game.

For VOIP

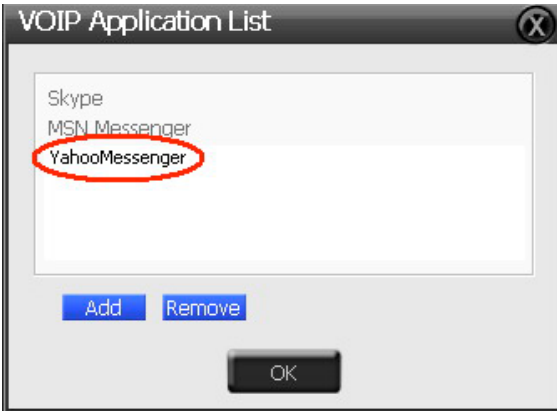
1. Press App List
2. If you don't see the VOIP application of yours in the list, press Add.(Make sure the Skype and MSN Messenger are the latest version)



3. Look for the application's location and Open it.



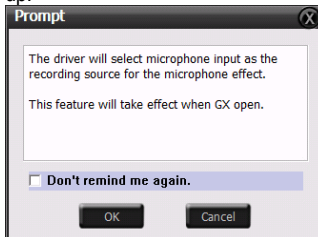
4. Your VOIP application has been added into list.



5. Check the check box of ChatEX and Magic Voice.
6. You can use ChatEX and Magic Voice when you chat online.



Click the checkbox to enable VocalFX function, then a prompt message will pop up:



This message implies the record device will be set to microphone. Make sure the GX function is enabled. Click "OK" to accept it, or "Cancel" if you want to enable it later. Check "Don't remind me again" if you don't want to see this message pop up next time.

7. Troubleshooting and FAQs

[Troubleshooting]

The audio card driver could not be installed on my PC.

Instructions:

1. Make sure that you have properly plugged the audio card in the PCI Express slot on your motherboard.
2. Check that the Windows hardware device manager has discovered a multimedia audio device. If no device is found, please try scanning for new hardware.
3. Try soft reboot (restart) your Windows.
4. Remove the card, plug it into another PCI Express slot, and try again.

I cannot find the Xonar Essence STX Audio Center

Instructions:

1. Make sure you have installed the driver
2. Locate the Xonar Essence STX Audio Center icon in the system tray on the bottom right-hand corner of the screen. Double-click the icon to open the Xonar Essence STX Audio Center utility.



3. If the icon could not be found in the system tray, go to the Windows Control Panel and double click the “Xonar Essence STX Audio Center” icon to make it visible in the system tray again.
4. After the driver installation is complete, it’s recommended that you reboot your computer to complete the setup. If the icon still doesn’t appear, please try installing the driver package again.

I cannot hear any sound from my analog speakers

Instructions:

1. Xonar Essence STX card needs the power cable to supply addition power in addition to the basic PCI Express bus power. Double check you have plugged the small 4-pin power plug onto Xonar Essence STX power connector. If you did not plug the internal power, Xonar Essence STX Audio Center will remind you a warning message and will not allow your operation when you double-click Xonar Essence STX Audio Center icon in the system tray.
2. Ensure that you have connected speakers properly and have powered on your speakers.

3. Ensure that the device master volume or the software player has NOT been muted on the Xonar Essence STX Audio Center.
4. If you are using Dolby Digital Live encoder through the S/PDIF output, the analog output will be muted to get rid of the interference between your digital speaker system and analog speakers or headphones. Check if this is the case.
5. Try restarting your Windows.

I cannot hear any sound from the S/PDIF output

Instructions:

1. Ensure that you have enabled S/PDIF output in the Audio Center GUI (Main page)
2. Ensure that you are connecting the correct S/PDIF output jack on the card to the decoder's (AV receiver) S/PDIF input jack
3. You may need to select the correct input and mode of your decoder or AV receiver. For Dolby Digital output, you may have to double check that the AV receiver is in that decoding mode.
4. If you are using 192KHz PCM output, please make sure your decoder can support 192KHz decoding. Try changing it to 44.1K or 48KHz first.

I cannot hear audio input (Mic, Line-in, AUX, etc.) from my speakers

Instructions:

1. Go to the mixer recording page in the Audio Center and select the correct input as the recording source. If you are using Windows Vista, also go to system audio control panel to see the current default recording/input device is right.
2. Remember to turn on the digital monitoring button for that recording source.

I cannot hear the TV tuner audio from my speakers

Instructions:

1. If you are using a traditional TV tuner card which has analog audio output, please connect it to the Aux-In header on the audio card
2. Select Aux-In as the recording source and remember to turn on the digital monitoring button on the recording mixer page
3. If you are using a TV tuner card which has digital audio output instead of analog, check that the sound is not muted and whether other applications can play sound out. If you still have problem, read the TV tuner card's software user guide.

I found no sound effects when playing 96K or 192KHz sound sources.

Instructions:

1. Currently Xonar Essence STX effects including Dolby supports common 44.1K, 48KHz sound sources processing and will assure high-definition audio (96K/192KHz) in hi-fidelity playback. This is also usually the behavior that professional audiophiles and musicians prefer.
2. If you still want to have the effects, you can use some editing software (Ableton Live, Cakewalk, CoolEdit, Soundforge, etc.) to convert the sounds into 48KHz files.
3. Note that the frequency meter on Xonar Essence STX Audio Center panel will not take effect either when the playback source is 96KHz or 192KHz sample rate to prevent any processing distortion.

[FAQ]

Q1: Does the Xonar Essence STX support Windows Vista?

Answer:

Yes, the Xonar ESSENCE STX driver package does support Windows Vista 32/64 bit and most key features are available. In addition, Xonar Essence STX supports unique DS3D GX on Windows Vista, which can recover DirectSound 3D hardware and EAX gaming sound effects on Vista for a lot of existing DirectX games.

Q2: Why does the Xonar Essence STX support Dolby technology?

Answer:

Dolby is the ONLY brand and technology recognized by the CE industry and available on a wide range of audio equipment. Xonar includes these features to make your PC a powerful media and entertainment center.

Q3: Why is Xonar Essence STX the best audio card for HTPC and multi-channel speakers?

Answer:

The Xonar Essence STX supports Dolby Digital Live, which allow a single digital connection to your AV receiver to carry Dolby Digital audio. In addition, Xonar Essence STX also provides Dolby Pro-Logic IIx to upmix TV and other music to multi-channel surround sound in Home Theater environments. Xonar Essence STX also has Ultra High Fidelity SNR at 192K/24bit, which is the high quality consumer audio card in the world. Therefore, it's also the best card to deliver the high quality audio through an analog connection to your home theater system or high-end multi-channel speakers.

Q4: Does the Xonar Essence STX support EAX on Vista?

Answer:

Yes, Xonar Essence STX can support EAX2.0 not only on Windows XP but also on Vista through innovative DirectSound3D Game EXtensions v1.0 (DS3D GX 1.0) technology.

Q5: Why do I need Dolby for PC games?

Answer:

1. Dolby Digital and Pro-Logic IIx are available on the latest game consoles, like XBOX360, PS3, and Wii. Dolby can provide the best gaming sound experience and compatibility with home theater or TV systems.
2. Dolby Headphone and Dolby Virtual Speaker are the best 3D sound positioning, spatial modeling and 5.1-channel virtualization technology for regular stereo headphones and speakers, reo headphones and speakers

Q6: What is the most important benefit of the Xonar Essence STX for musicians?

Answer:

1. Ultimate Fidelity: Xonar Essence STX has the highest quality of audio in/out for the cleanest sound production.
2. Duplex HD: Supports audio sampling rates up to 24bit/192KHz for all inputs and outputs.
3. ASIO 2.0: Xonar Essence STX includes an ASIO 2.0 driver for low-latency, low-distortion music creation application.

Q7: Will PCM sound output through S/PDIF be just 2 channels even with different analog output channels?

Answer:

The S/PDIF protocol specification (IEC-60958) can only carry 2-channel PCM data or non-PCM AC3/DTS data. So, when a user selects PCM output for S/PDIF, the Xonar sound card will always deliver 2 channel PCM data through the S/PDIF output port. For attaining 5.1 channel surround sounds, you can select Dolby Digital Live encoding output from the S/PDIF out menu, which will allow the Xonar Essence STX to deliver 5.1 surround sound for DVD movies, and even stereo music.

